



# PLASTICS GUIDE 2026



**High-quality plastic dispensing syringes, cartridges, components, and needles  
used by the most demanding industries in the world.**





**Techcon Plastics** are accepted by the aerospace, medical device, automotive, consumer electronics, and military & defence sectors.

# TABLE OF CONTENTS

Techcon Plastics Standards 2026	3
Techcon Cleanliness Statement	4
Industrial Certification	4
700 Series Syringes & Dispensing Components	5
TS60C-LL-N 140 cc Syringe Barrel	8
Dispensing Cartridges & Accessories	9
Disposable Nozzles & Tip Adapters	11
Techkits, Mix Heads, Rods and Tools	12
TE Series Dispensing Tips	13
TT & BT Series Dispensing Tips	14
TS Series Dispensing Tips	15
MT Series Dispensing Tips	16
Warranty	17
Glossary	18
Appendix	20







## TECHCON PLASTICS STANDARDS 2026

Through months of research and refinement, testing and trial & error, Techcon is proud to announce our new level of quality standards for cleanliness, consistency, purity, resistance to impact, high pressure, or extreme temperatures, for all of our plastic packaging products.

Our focus is not on meeting standards set by local, national, or global authorities.

Our focus is on exceeding your standards.

And continuing to raise our own.

When you purchase from our line of high-quality dispensing plastics, you can rest assured each piece was produced while adhering to the **TECHCON PLASTICS STANDARDS**:

- Meet or exceed industry standards for repeatability
- Meet or exceed industry standards for UV blockage
- Meet or exceed ROHS, REACH, and TPPA standards
- Achieve Impact resistance two-times industry requirements
- Produced in a Silicon-free, Chloride-free environment
- Approved for operating pressures up to 100 psi/6.9 bar
- Approved for storage temperatures as low as -40 F / -40 C and as high as 100 F / 38 C

**Techcon Plastics Standards** require that all plastics are completely free of:

- |                               |                |             |
|-------------------------------|----------------|-------------|
| ✓ Loose Debris                | ✓ Cold Slugs   | ✓ Waviness  |
| ✓ Contamination               | ✓ Delamination | ✓ Grease    |
| ✓ Blush                       | ✓ Orange Peel  | ✓ Luricants |
| ✓ Flow Lines                  | ✓ Cracking     | ✓ Burns     |
| ✓ Knit Lines                  | ✓ Crazing      | ✓ Gas Marks |
| ✓ Weld Lines                  | ✓ Nicks/Gouges | ✓ Marbling  |
| ✓ Loose Debris, Contamination |                |             |

See the Glossary for definitions of these terms (page 18)

Contact your Techcon representative for complete information about our Plastics Inspection Process.



Techcon 700 Series Precision Syringe Barrels & Components and Dispensing Cartridges & Components are designed to meet the most demanding manufacturing standards. Leading edge materials and advanced engineering design make Techcon packaging plastics unparalleled in dispensing performance.

## TECHCON CLEANLINESS STATEMENT

*All Techcon plastic packaging products are molded and assembled in a controlled clean environment to ensure the highest standards of cleanliness and that our products are free of loose contaminants or debris.*

## INDUSTRIAL CERTIFICATION

Techcon certifies that our Precision Syringe Barrels, Cartridges, and Components meet or exceed ASTM and industry standards, as tested in laboratory conditions, in the following areas:

**Accuracy and Repeatability** – Meet or exceed the repeatability requirement for industrial dispensing use. The O° taper design and tight tolerances ensure the highest rate of dispensing accuracy and repeatability.

**Silicone and Chloride Free** – Molded in a Silicone- and Chloride-free environment to prevent contamination.

**ROHS and REACH Compliant** – Techcon takes every precaution to ensure none of the 700 Series products contain any SVHC (Substances of Very High Concern).

**Burst Strength** – Designed for operating pressures up to 100 psi (6.9 bar). Destructive pressure tests are employed to determine burst strength. All 700 Series syringes pass the destructive pressure burst test.

**Impact Resistance** – Designed to withstand high impact force. Employing the modified Gardner Impact Test of ASTM Standard D5420, it was proven that 700 Series syringe barrels are two times more resistance to impact stress than the industry standard requirements.

**Storage Temperature** – Can be stored (with no pressure applied) between -40 F° and 100 F° (-40° C - 38° C).

**UV Block Capability** – 700 Series UV products meet or exceed industry standards for UV blockage. Dark amber barrels provide UV and visible light block up to 520 nanometers; Black syringe barrels provide 100% UV and visible light block.

**Transportation** – Unfilled 700 Series syringe barrels are safe to transport by ground, sea, or air. Transportation of filled syringe barrels depends on the type of material being packaged. Customers are urged to verify with the material manufacturer its transportation requirements.

If you have questions about Techcon Quality Standards for this or any other product, please contact your Techcon representative.



Can La  
Director of Product Management  
November, 24, 2025



## 700 Series Syringe Barrel Kits

For your convenience these syringe barrels and white wiper pistons are packaged together without pistons inserted. Kits with blue pistons are also available. Sold in bulk and packs of 50.

### Syringe Barrel Kits With White Wiper Pistons

Size	Natural	Amber	Black
3 cc	7030LL1NW-1000	7030LL1DW-1000	7030LL1BW-1000
5 cc	7050LL1NW-1000	7050LL1DW-1000	7050LL1BW-1000
10 cc	7100LL1NW-1000	7100LL1DW-1000	7100LL1BW-1000
30 cc	7300LL1NW-500	7300LL1DW-500	7300LL1BW-500
55 cc	7550LL1NW-250	7550LL1DW-250	7550LL1BW-250

### Syringe Barrel Kits With Blue Wiper Pistons

Size	Natural
3 cc	7030LL1NBL-1000
5 cc	7050LL1NBL-1000
10 cc	7100LL1NBL-1000
30 cc	7300LL1NBL-500
55 cc	7550LL1NBL-250

## 700 Series Air Powered Pistons

Spread the pressure evenly, using a piston for consistent dispensing of even high-viscosity material. Easy Flow pistons (blue) require less pressure to dispense and prevent air from becoming entrapped during the dispense process. Tight fit Wiper pistons (white) provide a complete seal for low-viscosity fluid. Loose fit straight wall pistons (red) prevent stringing and bouncing when dispensing high-viscosity material. Sold in bulk and packs of 50. Made of polyethylene.

Size	Straight Wall Piston (Red)	Easy Flow Piston (Blue)	Wiper Piston (White)	High Interference (Green)
3 cc	7030006R-1000	7030007BL-1000	7030009W-1000	
5 cc	7050006R-1000	7050007BL-1000	7050009W-1000	
10 cc	7100006R-1000	7100007BL-1000	7100009W-1000	
30-55 cc	7300006R-1000	7300007BL-1000	7300009W-1000	7300008G-1000

## 700 Series Dispensing Components

Our 700 Series Premier Dispensing Components are silicone and chloride-free and designed to work with industry-standard equipment. 700 Series Dispensing components ensure accuracy, repeatability, and productivity.

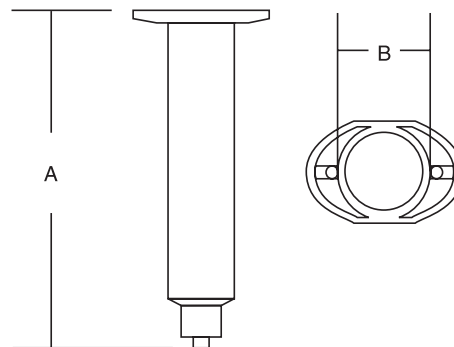
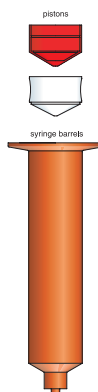
### 700 Series Syringe Barrels

Unique ultra-low draft construction of the inner diameter yields high accuracy and stability. They are comprised of industry-compliant silicone and chloride-free, low-friction PP. Available in three different colors: Natural for most generic applications, amber provides protection of UV/visible light block (up to 520nm), but with the ability to see material inside the barrel; and Black for total light block. Sold in bulk and packs of 50.

Size	Natural	Amber	Black
3 cc	7030LL1N-1000	7030LL1D-1000	7030LL1B-1000
5 cc	7050LL1N-1000	7050LL1D-1000	7050LL1B-1000
10 cc	7100LL1N-1000	7100LL1D-1000	7100LL1B-1000
30 cc	7300LL1N-500	7300LL1D-500	7300LL1B-500
55 cc	7550LL1N-250	7550LL1D-250	7550LL1B-250

### 700 Series Syringe Barrel Dimensions

Capacity	Overall Length A inches/mm	Outside Diameter B inches/mm
3 cc	2.96/75.18	0.46/11.56
5 cc	2.83/71.9	0.59/14.99
10 cc	3.58/90.9	0.72/18.29
30 cc	4.66/118.36	0.99/25.15
55 cc	6.91/175.51	1.01/25.65



# 700 Series Syringes & Components



## 700 Series Receiver Head Assemblies

Receiver Head Assemblies are the connecting link between time/pressure controllers and syringe assemblies. These assemblies provide a safe connection for accident-proof dispensing. Available with 3 or 6 feet (0.9 - 1.8 meters) of tubing. Consists of a Delrin® receiver head with Viton® O-ring, tubing and male quick connector. Sold individually.

Size	3' (0.9m) Hose	6' (1.8m) Hose	No Hose
3 cc	70303RHB	70306RHB	70300RHR
5 cc	70503RHB	70506RHB	70500RHR
10 cc	71003RHB	71006RHB	71000RHR
30/55 cc	73003RHB	73006RHB	73000RHR

## In-Line Fluid Filter

Attach the fluid filter to the receiver head to prevent fluid from being pulled back from the syringe barrel into the dispenser.

Part No.	Description
881-000-000	In-line fluid filter kit
TSD800-11	In-line fluid filter only

## In-Line Filter Specifications

Housing Material	PP
Filter Media	0.2 µm PTFE
Operating Pressure	75 psi max.

## Replacement O-rings for Receiver Heads

Sold in packs of 10.

Size	EPR O-ring	Viton® O-ring
3 cc	P3015EPK	P3019VPK
5 cc	P3016EPK	P3020VPK
10 cc	P3017EPK	P3021VPK
30/55 cc	P3018EPK	P3022VPK

The Receiver Head is installed with a Viton® O-ring.

## 700 Series End Caps

Designed to seal the large end of the syringe barrel to ensure no contaminants come in contact with material during storage and shipment. Standard color is blue. Made from PP. Sold in bulk and packs of 50.

Size	End Cap
3 cc	703000CB-1000
5 cc	705000CB-1000
10 cc	710000CB-1000
30/55 cc	730000CB-1000



## 700 Series Tip Cap

Designed to seal the syringe barrel tip during storage and shipment. Fits all syringe barrel sizes. Sold in bulk and packs of 50. Made from PP.



Part No.	Description
7015LL-1000	Tip Cap Double Helix Thread Orange
TE7015LB-1000	Tip Cap Double Helix Thread Black

## Stand-up Tip Cap

Designed for easy attachment with large flat base to allow the syringe barrel to stand upright. Sold in bulk and packs of 50. Made of PP.



Part No.	Description
7015STC-1000	Blue Stand up Tip Cap

## TS700 Series Manual Syringe Gun

Lightweight syringe barrel applicator gun provides excellent control for medium/high-viscosity material. Easy to use. No dripping or spillage.

Size	Manual Syringe Gun
10 cc	TS710SG
30 cc	TS730SG
55 cc	TS755SG
Size	Replacement Rods
10 cc	71000ROD
30 cc	73000ROD
55 cc	75500ROD-C



## Finger Switch Assembly

Use the Finger Switch with Techcon's dispensers and syringes in place of a foot pedal. Provides control at your finger tip.

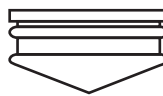
Part No.	Description
DX9010	Finger Switch Assembly for TS Series Dispenser

## 700 Series Manual Plungers & Pistons for 700 Series Barrels

### Manual Plungers & Pistons 700 Series Syringe Barrels

The new manual syringe assemblies provide simple and quick dispensing solutions without the need for compressed air. Molded from PP resin, manual Plungers are compatible with a wide range of dispensing fluids. Pistons are made from thermoplastic rubber and are available dry or with lubrication. Sold in packs of 50.

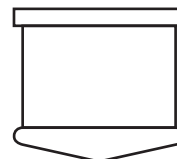
Plungers and Pistons	
Part No.	Description
7030004PPK	700 Manual Thumb Plunger, 3 cc
7030002MPK	700 Manual Piston Rubber, 3 cc
7030002M-LUBPK	700 Manual Piston Rubber, Lub, 3 cc
7050004PPK	700 Manual Thumb Plunger, 5 cc
7050002MPK	700 Manual Piston Rubber, 5 cc
7050002M-LUBPK	700 Manual Piston Rubber, Lub, 5 cc



Manual Rubber Piston



Plastic Wiper Piston

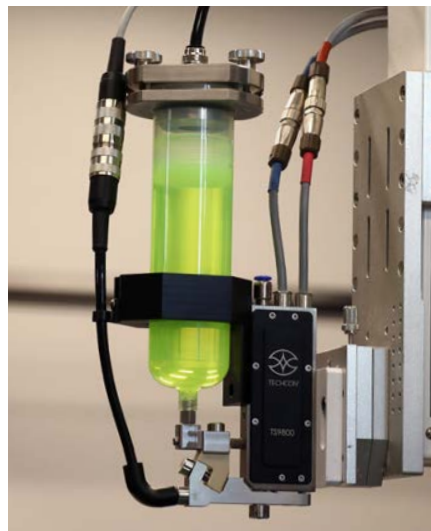


Air-Powered Rubber Piston



## TS60C-LL-N 140 cc Syringe Barrel

Introducing one of the largest syringe barrels on the market



**Techcon TS60C-LL-N** 140 cc syringe barrel is one of the largest capacity syringe barrels available in the fluid dispensing market, allowing productions to run longer with fewer fluid changeovers.

### Key Features & Benefits

- Made of clear Polypropylene (PP)
- Ultra-low draft construction of inner diameter
- High accuracy and stability
- Silicon and chloride-free
- Connects directly to air adapters
- Allows for longer production runs, Reducing downtime

#### TS60C-LL-N Specifications

Capacity	140 cc (4.73 oz)
Material	Clear PP
Length	177 mm (6.969")
Outside Diameter (O.D.)	40 mm (1.57")
Maximum Pressure	100 psi

#### TS60C-LL-N Part Numbers

Part Number	Description
TS60C-LL-N-50	1 Syringe, 140 cc (QTY = 50)
TS60C-LL-N-250	1 Syringe, 140 cc (QTY = 250)
TS5C-A-50	2 End Cap for TS60C-LL-N Syringe (QTY = 50)
TS5C-A-500	2 End Cap for TS60C-LL-N Syringe (QTY = 500)
TS7P-LL-50	3 Luer lock tip cap for TS60C-LL-N (QTY = 50)
TS7P-LL-500	3 Luer lock tip cap for TS60C-LL-N (QTY = 500)
TS4P-LL-50	4 Piston for TS60C-LL-N Syringe (QTY = 50)
TS4P-LL-500	4 Piston for TS60C-LL-N Syringe (QTY = 500)
RH60CC-LL-6	5 Receiver Head Assembly w/ 6 ft. / 1.8 m Hose

All Techcon syringe barrels are manufactured in our silicone-free facilities in the United States and certified for industrial use.

### Typical Applications

Bonding / Underfill / Potting /  
Conformal Coating





## Cartridges & Accessories

These dependable, high-quality products are designed for the rigors of manufacturing and have undergone continuous improvement to keep pace with the exacting requirements of this challenging field.

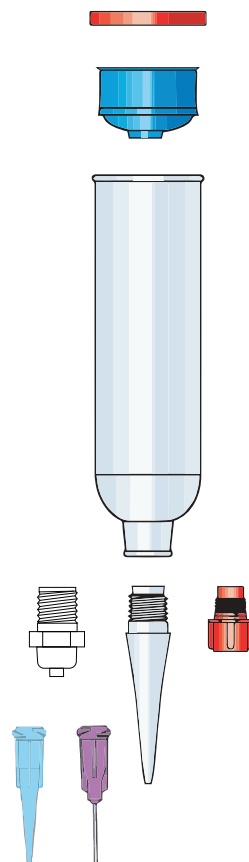
Disposable plastic cartridges and nozzles provide a clean, efficient and low-cost method to meet all types of production requirements. Plungers with a wiper-leading edge clean each cartridge thoroughly. Caps for both ends of the cartridges are available, making the system ideal for prepackaged materials and pre-mixed frozen material (PMF) handling.



### Cartridges

Cartridges are available in 2.5, 6, 8, 12 and 20 ounce and 1/10 gallon capacities. Each size can be used with hand or bench-mounted air-powered dispensing tools or manual dispensing tools. Cartridges are molded in either high-density or low-density polyethylene. Custom colors and assemblies are available. Sold in bulk packages.

Cartridges				
Part Number	Description	Length Inches/mm	Diameter Inches/mm	Quantity
<b>TS25C-500</b>	2.5 oz (65 ml) Natural HD	4.00/101.6	1.59/40.4	500
<b>TS25C-GREEN-500</b>	2.5 oz (65 ml) Green HD	4.00/101.6	1.59/40.4	500
<b>TS25C-LD-500</b>	2.5 oz (65 ml) Natural LD	4.00/101.6	1.59/40.4	500
<b>TS60C-500</b>	6 oz (165 ml) Natural HD	7.11/180.6	1.59/40.4	500
<b>TS60C-BLACK-500</b>	6 oz (165 ml) Black HD	7.11/180.6	1.59/40.4	500
<b>TS60C-BLUE-500</b>	6 oz (165 ml) Blue HD	7.11/180.6	1.59/40.4	500
<b>TS60C-GREEN-500</b>	6 oz (165 ml) Green HD	7.11/180.6	1.59/40.4	500
<b>TS60C-YELLOW-500</b>	6 oz (165 ml) Yellow HD	7.11/180.6	1.59/40.4	500
<b>TS60C-LD-500</b>	6 oz (165 ml) Natural LD	7.11/180.6	1.59/40.4	500
<b>TS80C-250</b>	8 oz (225 ml) Natural HD	8.92/226.6	1.59/40.4	250
<b>TS80C-LD-250</b>	8 oz (225 ml) Natural LD	8.92/226.6	1.59/40.4	250
<b>TS120C-250</b>	12 oz (330 ml) Natural HD	12.34/313.4	1.59/40.4	250
<b>TS120C-BLACK-250</b>	12 oz (330 ml) Black HD	12.34/313.4	1.59/40.4	250
<b>TS120C-GREEN-250</b>	12 oz (330 ml) Green HD	12.34/313.4	1.59/40.4	250
<b>TS120C-RED-250</b>	12 oz (330 ml) Red HD	12.34/313.4	1.59/40.4	250
<b>TS120C-YELLOW-250</b>	12 oz (330 ml) Yellow HD	12.34/313.4	1.59/40.4	250
<b>TS120C-LD-250</b>	12 oz (330 ml) Natural LD	12.34/313.4	1.59/40.4	250
<b>TS110C-250</b>	1/10 Gallon (310 ml) Natural HD	8.99/228.3	1.85/47.0	250
<b>TS110C-LD-250</b>	1/10 Gallon (310 ml) Natural LD	8.99/228.3	1.85/47.0	250
<b>TS20C-100</b>	20 oz (600 ml) Natural HD	10.3/254.8	2.57/65.3	100
<b>TS20C-BLACK-100</b>	20 oz (600 ml) Black HD	10.3/254.8	2.57/65.3	100



# Cartridges & Accessories



## Plungers

Wiper Plungers incorporate a modified or extended front wiper edge. Sold in bulk packages.

Plungers		Qty
Part Number	Description	1000
TS1P-SR-1000	2.5, 6, 8, 12 oz., Blue Wiper LD	1000
TS1PB-SR-1000	2.5, 6, 8, 12 oz., Black Wiper LD	1000
TS1WP-1000	2.5, 6, 8, 12 oz., Natural Extended Wiper LD	1000
TS1WP-BLACK-1000	2.5, 6, 8, 12 oz., Black Extended Wiper LD	1000
TS2PW-1000	1/10 Gallon White Extended Wiper LD w/ EVA	1000
TS2P-BLACK-1000	1/10 Gallon Black Wiper LD	1000
TS20P-100	20 oz White Wiper MD	100
TS20PLD-100	20 oz Natural Wiper LD	100

## Cartridge Assemblies

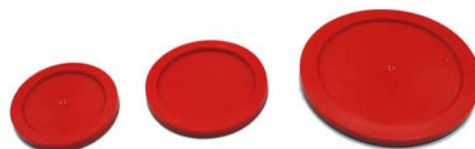
HD and LD Cartridges with plungers inserted offer an even higher level of convenience. Check the product descriptions for exact configuration and quantity.

Cartridge Assemblies			
	Part Number	Description	Qty
2.5 oz	TS25CP-500	2.5 oz HD with TS1P-SR Plunger inserted	500
	TS25CP-LD-500	2.5 oz LD with TS1P-SR Plunger inserted	500
	TS25CP-LD-BLUE-500	2.5 oz LD blue with TS1P-SR Plunger inserted	500
	TS25CWP-500	2.5 oz HD with TSIWP Plunger inserted	500
	TS25CPB-500	2.5 oz HD with TS1PB-SR Plunger inserted	500
	TS25CPB-LD-500	2.5 oz LD with TS1PB-SR Plunger inserted	500
6 oz	TS25CWP-500	2.5 oz LD with TSIWP-SR Plunger inserted	500
	TS60CP-500	6.0 oz HD with TS1P-SR Plunger inserted	500
	TS60CP-LD-500	6.0 oz LD with TS1P-SR Plunger inserted	500
	TS60CP-LD-BLUE-500	6 oz LD blue with TS1P-SR Plunger inserted	500
	TS60CPB-500	6.0 oz HD with TS1PB-SR Plunger inserted	500
	TS60CPB-LD-500	6 oz, LD with TS1PB Plunger inserted	500
8 oz	TS60CWP-500	6 oz with TSIWP Plunger inserted	500
	TS60CWP-GREEN-500	6 oz HD Green with TSIWP Plunger inserted	500
	TS60CWP-LD-500	6 oz LD with TSIWP Plunger inserted	500
	TS80CP-250	8 oz with TS1P-SR Plunger inserted	250
	TS80CWP-250	8 oz with TSIWP Plunger inserted	250
	TS120CP-250	12 oz HD with TS1P-SR Plunger inserted	250
12 oz	TS120CPB-250	12 oz HD with TS1PB-SR Plunger inserted	250
	TS120CWP-250	12 oz HD with TSIWP Plunger inserted	250
	TS120CWP-GREEN-250	12 oz HD Green with TS1PB Plunger inserted	250
	TS20CP-100	20 oz with TS20P Plunger inserted	100
20 oz	TS20CPFM-100	20 oz with TS20PFLD Plunger and 600-380 Mix Wheel inserted - MOQ applies	100

## Caps

Top and bottom Caps provide a choice of methods to seal the neck and base of the cartridge. Sold in bulk packages of 1,000.

Caps		
	Part Number	Description
Flange Caps	TS2C-1000	2.5, 6, 8, 12 oz Red LD Flange Cap
	TS2C-BLACK-1000	2.5, 6, 8, 12 oz Black LD Flange Cap
	TS2C-GREEN-1000	2.5, 6, 8, 12 oz Green LD Flange Cap
	TS4C-1000	1/10 Gallon Red LD Flange Cap
	TS6C-1000	20 oz Red LD Flange Cap
Thread Caps	TS3P-1000	Threaded Tri-Seal Red PE Cap
	TS4P-1000	Threaded Square Red PE Cap
	TS5P-1000	Snap On Tri-Seal Red PE Cap
	TS5P-BLACK-1000	Snap On Tri-Seal Black PE Cap
	TS5P-GREEN-1000	Snap On Tri-Seal Green PE Cap
	TS5P-BLUE-1000	Snap On Tri-Seal Blue PE Cap
	TS6P-BLACK-1000	Threaded Black PE Cap
	TS6P-RED-1000	Threaded Red PE Cap
	TS6P-GREEN-1000	Threaded Green PE Cap



TS2C / TS4C / TS6C



TS2C / TS2C-BLACK / TS2C-GREEN



TS5P Snap-On Tri-Seal



TS4P

TS6P

TS3P

## Disposable Nozzles and Dispensing Tip Adapters

Nozzles and dispensing tip adapters provide a wide range of application capabilities. Standard nozzles may be cut back to increase orifice size.

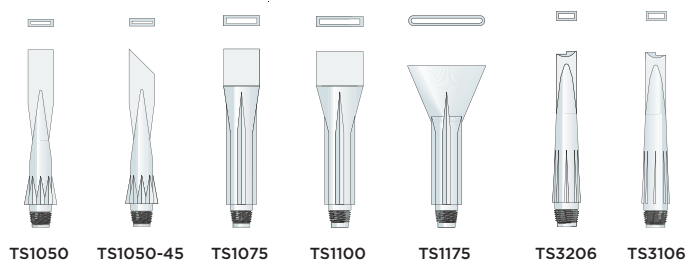
### Standard Nozzles

Standard nozzles are precision moulded from natural polyethylene and have 1/4" NPT male threads to fit all Techcon cartridges or equivalent. Color nozzles are available upon request. Sold in bulk packages of 1,000.

Part No.	Description
TS216-1000	2" (64 mm) x 1/16" (1.6 mm), HDPE
TS218-1000	2" (64 mm) x 1/8" (3.2 mm), HDPE
TS218-LD-1000	2" (64 mm) x 1/8" (3.2 mm), LD
TS416-HO-HD-1000	4" (101.6 mm) x 1/16" (1.6 mm), HDPE
TS416-HO-LD-1000	4" (101.6 mm) x 1/16" (1.6 mm), LD
TS418-HO-LD-1000	4" (101.6 mm) x 1/8" (3.2 mm), LD
TS432-HO-HD-1000	4" (101.6 mm) x 1/32" (0.8 mm), HDPE
TS432-HO-LD-1000	4" (101.6 mm) x 1/32" (0.8 mm), LD
TS490-HO-LD-1000	4" (101.6 mm) x 3/32" (2.4 mm), LD
TS616-HO-LD-1000	6" (152.4 mm) x 1/16" (1.6 mm), LD
TS618-HO-LD-1000	6" (152.4 mm) x 1/8" (3.2 mm), LD

### Specialty Nozzles

Specialty nozzles are precision moulded from natural polyethylene and have 1/4" NPT male threads to fit all Techcon cartridges or equivalent. Sold in bulk packages of 1,000.



Part No.	Description
TS1050-1000	4" (101.6 mm) x 0.5" (12.4 mm) x 0.06" (1.52 mm)
TS1050-45-1000	4" (101.6 mm) x 0.5" (12.4 mm) x 0.06" (1.52 mm)
TS1075-1000	4.5" (114.3 mm) x 0.75" (19.5 mm) x 0.13" (3.3 mm)
TS1100-1000	4.4" (111.7 mm) x 1.0" (25.4 mm) x 0.13" (3.3 mm)
TS1175-1000	4" (101.6 mm) x 1.75" (44.45 mm) x 0.13" (3.3 mm)
TS3106-1000	3.8" (96.5 mm) x 0.35" (8.89 mm) x 0.11" (2.79 mm)
TS3206-1000	3.8" (96.5 mm) x 0.35" (8.89 mm) x 0.11" (2.79 mm)



### Bent Nozzles

Below is the list of standard bent nozzles. Special bent nozzles available upon request. Sold in bulk packages of 1,000.

Part No.	Description
TS416-HO-LD-B30/1-1000	Bent 30° at 1" (25.4 mm)
TS416-HO-LD-B30/2-1000	Bent 30° at 2" (50.8 mm)
TS416-HO-LD-B40/1-1000	Bent 40° at 1" (25.4 mm)
TS418-HO-LD-B30/1-1000	Bent 30° at 1" (25.4 mm)
TS618-HO-LD-B30/2-1000	Bent 30° at 2" (50.8 mm)



### Dispensing Tip Adapters

These tip adapters have standard 1/4" NPT male threads on one end to fit all Techcon cartridges or equivalent, and standard male Luer lock threads on the opposite side to fit all Luer lock dispensing tips.

Part No.	Description
TSD931-7	Dispensing Tip Adapter White PP
TSD931-14	Dispensing Tip Adapter Black PP

## Techkit Components

Complete Techkits								
Part Number	Size	Kit Type	Cartridge	Plunger	Cap	Mix Head	Rod	Ram Rod
110-80	1/10 gal. (280 ml)	Injection	TS110C	TS2PW	TS4C	110-340	810-100A	600-080
110-81T	1/10 gal. (280 ml)	Taped Barrier	TS110C	TS2PW	TS4C	110-350	800-100	
250-60	2 1/2 oz (50 ml)	Injection	TS25C	TS1WP	TS2C	600-200	610-100A	600-080
250-61T	2 1/2 oz (50 ml)	Taped Barrier	TS25C	TS1WP	TS2C	600-310	600-100	
250-61T-330	2 1/2 oz (50 ml)	Taped Barrier	TS25C	TS1WP	TS2C	600-330	600-100	
250-80	2 1/2 oz (50 ml)	Injection	TS25C	TS1WP	TS2C	600-200	810-100A	600-080
250-81T	2 1/2 oz (50 ml)	Taped Barrier	TS25C	TS1WP	TS2C	600-310	800-100	
600-60	6 oz (140 ml)	Injection	TS60C	TS1WP	TS2C	600-200	610-100A	600-080
600-61T	6 oz (140 ml)	Taped Barrier	TS60C	TS1WP	TS2C	600-310	600-100	
600-80	6 oz (140 ml)	Injection	TS60C	TS1WP	TS2C	600-200	810-100A	600-080
600-81T	6 oz (140 ml)	Taped Barrier	TS60C	TS1WP	TS2C	600-310	800-100	
600-81T-330	6 oz (140 ml)	Taped Barrier	TS60C	TS1WP	TS2C	600-330	800-330	
800-80	8 oz (210 ml)	Injection	TS80C	TS1WP	TS2C	600-200	810-100A	600-080
800-81T	8 oz (210 ml)	Taped Barrier	TS80C	TS1WP	TS2C	600-310	800-100	
800-81T-330	8 oz (210 ml)	Taped Barrier	TS80C	TS1WP	TS2C	600-330	800-330	
200-80	20 oz (550 ml)	Injection	TS20C	TS20P	TS6C	600-360	810-100A	600-080
200-81T	20 oz (550 ml)	Taped Barrier	TS20C	TS20P	TS6C	600-370	800-100	
200-81T-PFLD	20 oz (550 ml)	Taped Barrier	TS20C	TS20PFLD	TS6C	600-380	800-100	

### Mix Heads



Mix Heads	
Part Number	Description
110-340	1/10 gal. (280 ml) Mix Head
110-350	1/10 gal. (280 ml) Foiled Mix Head
600-200	Open Mix Head
600-300	Wheel Mix Head
600-310	Foiled Wheel Mix Head
600-320	Half Closed Circle Mix Head
600-330	Foiled Half Closed Circle Mix Head
600-360	20 oz (550 ml) Wheel Mix Head
600-370	20 oz (550 ml) Foiled Wheel Mix Head
600-380	20 oz (550 ml) Spoked Wheel Mix Head

### Sealant Smoothing and Removal Tools

Techcon plastic sealant tools are ideal for spreading, smoothing and removing sealants or adhesives. Approved for use in aerospace industry, these tools are designed to prevent damage to delicate substrates. Spatulas made from nylon. Smoothing tool made from Acetal.

Part Number	Description
TS1275-KP	1 Spatula Kit
TS1275-4	2 Smoothing tool, Red Acetal



Rods	
Part Number	Description
600-080	1 8" (203.2 mm) Ram Rod
600-100	2 6" (152.4 mm) Plugged Rod
600-101	Piston for Injection Rod
610-100A	3 6" (152.4 mm) Valved Rod with Piston
800-100	4 8" (203.2 mm) Plugged Rod
810-100A	5 8" (203.2 mm) Valved Rod with Piston
800-100-METAL	6 8" (203.2 mm) Plugged Rod, Metal





TE Series — Dispensing Tips

## TE Series Dispensing Tips

TE Series dispensing tips consist of a stainless-steel cannula with a double-helix PP hub.

This premium line of dispensing tips is burr-free and has an electro-polished cannula for unobstructed and consistent material flow. Silicone and chloride free. Sold in bulk and packs of 50.

TE Dispensing Tips				
	1/4" (6.35mm)	1/2" (12.7mm)	1" (25.4mm)	1-1/2" (38.1mm)
Gauge				
14		TE714050-1000	TE714100-1000	TE714150-1000
15		TE715050-1000	TE715100-1000	TE715150-1000
18	TE718025-1000	TE718050-1000	TE718100-1000	TE718150-1000
20	TE720025-1000	TE720050-1000	TE720100-1000	TE720150-1000
21	TE721025-1000	TE721050-1000	TE721100-1000	TE721150-1000
22	TE722025-1000	TE722050-1000	TE722100-1000	TE722150-1000
23	TE723025-1000	TE723050-1000	TE723100-1000	TE723150-1000
25	TE725025-1000	TE725050-1000		
27	TE727025-1000	TE727050-1000		
30	TE730025-1000	TE730050-1000		
32	TE732025-1000			
34	TE734025-1000			

### Color Coding and Gauge

For TE Series and TE Bent Dispensing Tips

Color	Gauge		I.D. (")	I.D. (mm)
Olive	14		0.063	1.600
Amber	15		0.054	1.371
Green	18		0.033	0.838
Pink	20		0.024	0.610
Purple	21		0.020	0.508
Blue	22		0.016	0.406
Orange	23		0.013	0.330
Red	25		0.010	0.254
Clear	27		0.008	0.203
Lavender	30		0.006	0.152
Yellow	32		0.004	0.102
Lime Green	34		0.0037	0.095



TE Bent Dispensing Tips

### TE Bent Dispensing Tips

TE Bent Tips are precision bent at 45° and 90° angles. Perfect for dispensing fluid in hard to reach places. Sold in packs of 50.

### TE Bent Dispensing Tips

	1/2" (12.7mm)		1-1/2" (38.1mm)
Gauge	90°	45°	45°
14	TE714050B90PK	TE714050B45PK	TE714150B45PK
15	TE715050B90PK	TE715050B45PK	
18	TE718050B90PK	TE718050B45PK	TE718150B45PK
20	TE720050B90PK	TE720050B45PK	
21	TE721050B90PK	TE721050B45PK	TE721150B45PK
22	TE722050B90PK	TE722050B45PK	
23	TE723050B90PK	TE723050B45PK	
25	TE725050B90PK	TE725050B45PK	
27	TE727050B90PK	TE727050B45PK	
30	TE730050B90PK	TE730050B45PK	

### Teflon™ Lined Tips

Teflon™ lined tips are ideal for low-viscosity fluids and cyanoacrylates (CA). They resist CA clogging and prevent damage to substrates. Teflon™ lined tips feature a double-helix PP color hub and a rigid Teflon™ crimped lining that protrudes approximately 1/8" (3.17 mm) from the inside of a stainless steel tube. Sold in packs of 50.



Teflon™ Lined — Dispensing Tips

### Teflon™ Lined Tips

Hub Color	1/2" (12.7mm)	1" (25.4mm)	Tip ID	Crimp ID
Gray	TF720050PK	TF720100PK	0.024" (0.61 mm)	0.023" (0.58 mm)
Pink	TF725050PK	TF725100PK	0.011" (0.28 mm)	0.006" (0.15 mm)

## TT Series

### Dispensing Tips

The tapered tip prevents blockage and increases the flow of high-viscosity material. Standard tips are molded in high-density polyethylene with UV light block additive. Rigid tips are molded in PP with opaque color. Sold in bulk and packs of 50.



#### Specifications

	ID (mm)	Width Line (mm)	Tip Height (mm)
TT14	1.6	2.4	0.8
TT16	1.19	1.785	0.595
TT18	0.838	1.257	0.419
TT20	0.58	0.87	0.29
TT22	0.406	0.609	0.203
TT25	0.254	0.381	0.127
TT27	0.203	0.3045	0.101

Color	Gauge	Standard TT Tips	Rigid TT Tips
Olive	14	TT14-DHUV-1000	TT14-RIGID-1000
Gray	16	TT16-DHUV-1000	TT16-RIGID-1000
Green	18	TT18-DHUV-1000	TT18-RIGID-1000
Pink	20	TT20-DHUV-1000	TT20-RIGID-1000
Blue	22	TT22-DHUV-1000	TT22-RIGID-1000
Red	25	TT25-DHUV-1000	TT25-RIGID-1000
White	27	TT27-DHUV-1000	TT27-RIGID-1000

## TS-P

### Plastic Dispensing Tips

Flexible tips allow access to hard to reach areas and allow you to "customize" the length. Ideal for CA applications. 1.5" length. Sold in bulk and packs of 50. Made from PP.

Color	Gauge	TS-P Dispensing Tips
Grey	15	TS15P-1-1/2-500
Brown	16	TS16P-1-1/2-500
Pink	18	TS18P-1-1/2-500
Yellow	20	TS20P-1-1/2-500
Black	22	TS22P-1-1/2-500
Red	25	TS25P-1-1/2-500

## BT Series

### Dispensing Tips

Use these double-helix Brush Tips for "spread" applications such as glues, paints and other materials. The Soft brush is made of Red sable. The Stiff brush is made of nylon. Sold in packs of 12.



Gauge	Soft Bristle	Bristle
16	BT16-SOFTPK	BT16-STIFFPK
18	BT18-SOFTPK	BT18-STIFFPK
22	BT22-SOFTPK	BT22-STIFFPK

#### Dispensing Tip Kit

Decide for yourself which tip to use. This kit contains a variety of the most popular 700 Series tips to let you test different tips to find the ones that fit your needs.



Part No.	Description
TN00DKIT	Dispensing Tip Kit

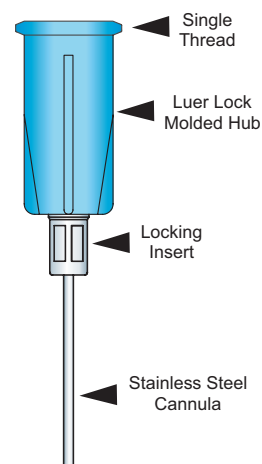
# Dispensing Tips TS Series

## TS Series Dispensing Tips



The TS Series Dispensing Tips offer a variety of dispensing performance and flexibility options. Stainless steel tubing is cut to precise lengths and ground to be burr-free. Cut tubing is crimped into an aluminum locking insert, then molded into polyethylene hubs. Molded hub colors correspond to gauge size. All TS Series tips secure to Techcon syringe barrels and correspond to the Luer lock specification.

Part Number	International Hub Color	Gauge	I.D. (inches)	I.D. (mm)	Length (inches)	Length (mm)
TS18-1/2-1000	Pink	18	0.033	0.838	0.5	12.7
TS18-1-1000	Pink	18	0.033	0.838	1.0	25.4
TS19-1/2-1000	Brown	19	0.028	0.711	0.5	12.7
TS19-1-1000	Brown	19	0.028	0.711	1.0	25.4
TS20-1/2-1000	Yellow	20	0.024	0.609	0.5	12.7
TS20-1-1000	Yellow	20	0.024	0.609	1.0	25.4
TS21-1/2-1000	Green	21	0.020	0.508	0.5	12.7
TS22-1/2-1000	Black	22	0.016	0.406	0.5	12.7
TS22-1-1000	Black	22	0.016	0.406	1.0	25.4
TS23-1/4-1000	Blue	23	0.013	0.330	0.25	6.35
TS23-1/2-1000	Blue	23	0.013	0.330	0.5	12.7
TS27-1/4-1000	Grey	27	0.008	0.203	0.25	6.35
TS30-1/4-1000	Lavender	30	0.006	0.152	0.25	6.35
TS30-5/16-1000	Lavender	30	0.006	0.152	0.31	7.94



## TS-M Metal Dispensing Tips

This series features a stainless steel cannula and aluminium hub. Sold in bulk quantity of 500.

Part Number	Gauge	Length (inches)	Length (mm)
TS14-1/2M-500	14	0.5	12.7
TS14-1M-500	14	1.0	25.4
TS14-2M-500	14	2.0	50.8
TS15-1M-500	15	1.0	25.4
TS16-1M-500	16	1.0	25.4



## TS-SS Metal Dispensing Tips

High-precision and high-tolerance for use in automated applications. With stainless steel cannula and nickel plated brass hub. Length of 1/2" (12.7 mm). Sold in packs of 12.



Part Number	Gauge	I.D. (inches)	I.D. (mm)
TS12SS-1/2PK	12	0.087	2.21
TS13SS-1/2PK	13	0.077	1.95
TS14SS-1/2PK	14	0.061	1.54
TS15SS-1/2PK	15	0.056	1.43
TS16SS-1/2PK	16	0.048	1.22
TS17SS-1/2PK	17	0.044	1.11
TS18SS-1/2PK	18	0.033	0.83
TS19SS-1/2PK	19	0.028	0.72
TS20SS-1/2PK	20	0.024	0.62
TS21SS-1/2PK	21	0.021	0.54
TS22SS-1/2PK	22	0.017	0.42
TS23SS-1/2PK	23	0.013	0.34
TS25SS-1/2PK	25	0.011	0.27
TS26SS-1/2PK	26	0.010	0.25
TS27SS-1/2PK	27	0.008	0.21
TS28SS-1/2PK	28	0.007	0.17

## MT Series Dispensing Tips

MT Series Precision Metal Tapered Tips deliver the best in high flow rates, which are ideal for high-speed dispensing at a fraction of the cost of comparable precision tips. The smooth internal conical fluid path increases performance and Reduces clogging and back pressure, allowing for higher flow rates.

The phosphor bronze construction with electroless nickel plating makes the MT Series ideal for use in robotic applications or whenever precision counts. The thin-walled design at the tip enhances dispensing accuracy, while at the same time reduces fluid tailing and stringing. Available from 18 to 30 gauge, the MT Series Tips are color-coded for easy identification. Sold individually.



## Key Features & Benefits

- Smooth internal fluid path
  - Reduces turbulent fluid flow
  - Reduces back pressure
  - Increases flow rates
  - Reduces air entrapment and fluid dripping
- Metal construction
  - Provides accurate positioning
  - Ideal for automatic dispensing applications
- Thin walls - Reduces fluid tailing and stringing
- Clog resistant - Ideal for filled fluids

Part Number	Hub Color		Gauge	I.D. (inches)	I.D. (mm)	OD (inches)	OD (mm)
MT18-PBN		Pink	18	0.040	1.013	0.050	1.265
MT19-PBN		Orange	19	0.033	0.833	0.043	1.085
MT20-PBN		Green	20	0.026	0.655	0.036	0.904
MT21-PBN		Blue	21	0.023	0.584	0.033	0.836
MT23-PBN		Purple	23	0.021	0.538	0.026	0.660
MT25-PBN		White	25	0.016	0.411	0.021	0.533
MT27-PBN		Red	27	0.012	0.31	0.017	0.432
MT30-PBN		Black	30	0.008	0.208	0.013	0.330





## Warranty

### Techcon Consumables Warranty Policy

“Consumables” are primarily plastic disposable parts, such as syringes, pistons, dispense needles, taper tips, cartridges, plungers, etc. and designed for single use.

Techcon/OK International warrants these products against dimensional issues, visual defects, or damage. OK International will replace defective consumable items free of charge at its sole discretion. Replacement of consumable parts is determined on a case-by-case basis and normally validated by return of sample parts to Techcon for inspection.

A Return Material Authorization (RMA) number must be obtained before returning any goods. The customer pays for inbound freight, and OK International pays for return freight of the same category for replaced consumables.

If it is determined that the products have been misused, such as using the products for purposes they were not designed for, or if there are unauthorized modifications, then the guarantee is void.

Please note: Plastic consumables have a recommended “shelf life” or “use by” of two (2) years from the date of delivery. If the consumables are stored appropriately, they may be usable beyond that date. Techcon/OK International cannot guarantee their quality after the two-year period.





## GLOSSARY

**Blending Color:** Mixing colors together to produce a third color with slight visible differences

**Blush:** Discoloration or change in gloss. Generally occurs at gate locations or abrupt changes in wall thickness.

**Bubbles:** Void pockets, typically seen only in transparent parts. May appear as bulge or protrusion in an opaque part.

**Burns:** Brown marks or streaks.

**Cold Slug:** First material to enter the mold during injection. Solid or semi-solid, this material leaves a distinct border with adjacent melted material, similar in appearance to welding.

**Contamination:** Large areas of discoloration from foreign material, embedded in the part or on the surface of the part.

**Cracking:** Stress-induced splitting or fissures causing separation of material.

**Crazing:** Multiple tiny cracks due to stress exerted on the part

**Delamination:** Separation or peeling of layers of plastic

**Discoloration:** Any change from the original color standard. Unintended, inconsistent color.

**Drag Marks:** Clusters of scratches from plastic dragging against mold details when a part is ejected from a mold.

**Flash:** Excess plastic at the parting line or mating surface of the mold. Normally a very thin and flat protrusion of plastic along an edge of a part. Can also appear as a very thin string or thread of plastic away from the edge of a part (string flash). Often found at vents, knock outs, and other shut-off areas.

**Gas Marks:** Dark discolored streaks caused by incomplete venting of gases, generated during the molding cycle.

**Gouge:** Surface imperfection due to abrasion that removes small amounts of material. Depth is measurable.



## GLOSSARY

**Grease:** Any type of machine lubrication on the surface of a part

**Knit Lines:** Visible lines where two or more fronts of molten plastic converge. Also called "knit lines" or "flow lines."

**Marbling:** Colored streaks caused by incomplete mixing of two different-colored plastics. Also referred to as "streaking."

**Nicks:** Like gouge, but of short length. Caused by impact rather than abrasion.

**Orange Peel:** Rippled or mottled appearance, viewable as concentric lines, caused by under-pressurizing. Orange peel is often the first sign of possible sink or shorting.

**Pin Push:** Protrusion of distortion caused by an ejector pin pushing into the part more than normal. The protrusion is most evident on the surface opposite the ejector pin.

**Pitting:** Crater-like imperfections on the surface of the part.

**Pulling:** Part distortion caused from plastic catching in the mold when the part is ejected.

**Scratch:** Surface imperfection due to abrasion that removes small amounts of material. Depth is not measurable. Differs from scratch in mold which leaves a consistent mark.

**Shine/Bald:** Glossy area on local surface.

**Shorts:** Missing plastic due to incomplete filling of the mold cavity.

**Sink:** Surface depression caused by non-uniform material solidification and shrinkage. Most often noted at interface between differing wall thicknesses.

**Pecks:** Small discolored points of matter embedded in the surface. Typically, black, caused by material contamination or material degradation.

**Splay:** Off-colored streaking. Usually appears silver-like. Splay is caused by moisture in the material or thermal degradation of the resin during processing. A similar look can be caused by cold material skipping across the surface during a fast fill. This is commonly called "jetting" String Flash.

**Waviness:** Wavy surface



TECHCON™

# APPENDIX

## Cannula-Style Tips - Specifications

	ID (inches)	ID (mm)	Width Line (mm)	Tip Height (mm)
TT14	0.063	1.6	2.4	0.8
TT16	0.047	1.19	1.785	0.595
TT18	0.033	0.838	1.257	0.419
TT20	0.023	0.58	0.87	0.29
TT22	0.016	0.406	0.609	0.203
TT25	0.010	0.254	0.381	0.127
TT27	0.008	0.203	0.3045	0.101

## Dispensing Tip Color Coding & Gauge

TE Series & TE Bent Series Tips

Color		Gauge	I.D. (inches)	I.D. (mm)
Olive		14	0.063	1.600
Amber		15	0.054	1.371
Green		18	0.033	0.838
Pink		20	0.024	0.610
Purple		21	0.020	0.508
Blue		22	0.016	0.406
Orange		23	0.013	0.330
Red		25	0.010	0.254
Clear		27	0.008	0.203
Lavender		30	0.006	0.152
Yellow		32	0.004	0.102
Lime Green		34	0.0037	0.095

## Abbreviations Commonly Used in this Catalog

Abbreviation	Name
CA	Cyanoacrylate Adhesive
EPDM	Ethylene propylene diene monomer rubber
EPR	Ethylene Propylene Rubber
FFKM	Perfluoroelastomer
PE	Polyethylene
PEEK	Polyether ether ketone
PFE	Perfluoroelastomer
PP	Polypropylene
PU	Polyurethane
UHMWPE	Ultra-High Molecular Weight Polyethylene

While both FFKM and PFE refer to the same type of material (perfluoroelastomer), "PFE" often specifically denotes the line of perfluoroelastomers manufactured by 3M Dyneon™.

## Cartridge Conversion: Imperial & Metric

Imperial	Metric	Metric Techkit Volume
2.5 oz	65 ml	50 ml
6 oz	165 ml	140 ml
8 oz	225 ml	210 ml
1/10 gal	310 ml	280 ml
12 oz	330 ml	
20 oz	600 ml	550 ml





**Corporate Headquarters (USA)****OK International / Techcon**

10800 Valley View Street  
Cypress, CA 90630 USA  
Tel: 1-714-799-9910  
Fax: 1-714-828-2001  
Email: oemorders@okinternational.com

**European Corporate Office****OK International / Techcon**

Eagle Close, Chandler's Ford  
Hampshire, SO53 4NF, United Kingdom  
Tel: English +44 2380 489 100  
Tel: Deutsch: +49 711 959 69 744  
Email: europe@okinternational.com

**China Corporate Office****OK International / Techcon**

4th floor East, The Electronic Building  
Yanxiang Industrial Zone  
High Tech Road, Guangming New District  
Shenzhen, P.R.C  
Tel: +86-755-2327 6366  
Fax: +86-755-2329 5492  
Email: china@okinternational.com



Images not owned by Techcon/OK International are used with permission through a Pexels Standard License. Copyright is maintained by the individual photographers. pexels.com

©2025 OK International, Inc. All rights reserved. DOVER and the Dover logo are registered trademarks of Delaware Capital Formation, Inc., a wholly-owned subsidiary of Dover Corporation.