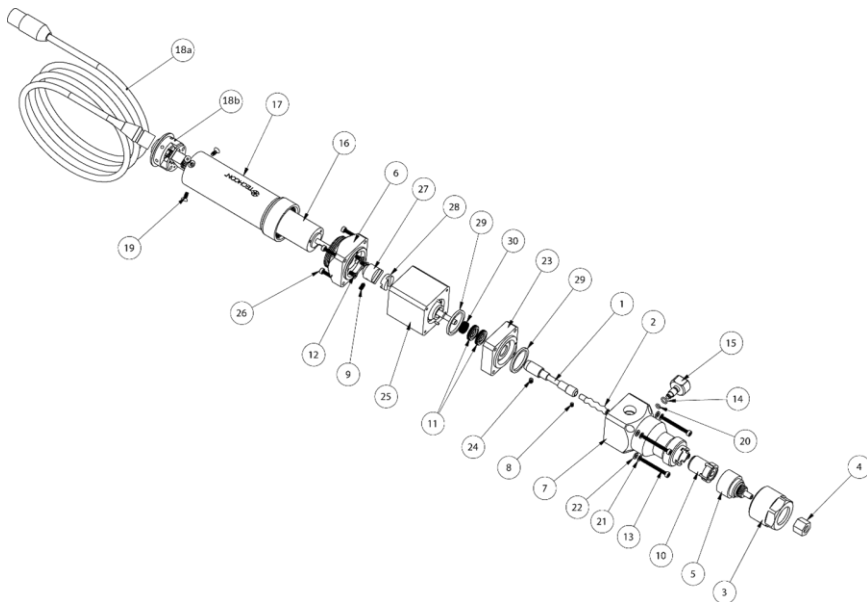


# TS8100 Progressive Cavity (PC) Pump M-Series Spare Parts Guide



Item	Part No.	Description	Qty
1	7509-9430	COUPLING, SHRINK TUBE COVERED	1
2	8100-100-001	REPLACEMENT ROTOR, SERIES 100, PC PUMP	1
2	8100-200-001	REPLACEMENT ROTOR, SERIES 200, PC PUMP	1
2	8100-300-001	REPLACEMENT ROTOR, SERIES 300, PC PUMP	1
2	8100-400-001	REPLACEMENT ROTOR, SERIES 400, PC PUMP	1
2	8100-500-001	REPLACEMENT ROTOR, SERIES 500, PC PUMP	1
3	7509-0090	RETAINER NUT, SERIES 100/200/300 PC PUMP	1
3	7509-0680	RETAINER NUT, SERIES 400 PC PUMP	1
4	7090-0030	LOCKING CAP, TE NEEDLE, TS7000 IMP VALVE	1
5	7509-0130	STATOR CAP BOTTOM, SERIES 100/200/300 PC PUMP	1
5	7509-0690	STATOR CAP BOTTOM, SERIES 400 PC PUMP	1
6	7509-0980	MOTOR MOUNT PLATE	1
7	7509-0920	STATOR HOUSING	1
8	2800-0836	SCREW, SET, M2.5 X 3MM LG, HEX SOCKET, SS	1
9	2800-0903	SCREW, SET, M3 X 0.5MM X 6MM LG, S.S	1

# TS8100 Progressive Cavity (PC) Pump M-Series Spare Parts Guide



10	8100-100-002	REPLACEMENT STATOR, SERIES 100, PC PUMP	1
10	8100-200-002	REPLACEMENT STATOR, SERIES 200, PC PUMP	1
10	8100-300-002	REPLACEMENT STATOR, SERIES 300, PC PUMP	1
10	8100-400-002	REPLACEMENT STATOR, SERIES 400, PC PUMP	1
10	8100-500-002	REPLACEMENT STATOR, SERIES 500, PC PUMP	1
11	7509-0990	SEAL, SHAFT	2
12	2800-0901	SCREW, M3 X 6MM LG., FH, PHIL, MACH, SS	3
13	2800-1019	SCREW, M2.5 X 25MM LG, SHC, SS	4
14	3300-0617	O-RING, 6 OD X 4 ID X 1MM WIDTH, VITON	1
15	7509-0570	VENT SCREW KNOB, PC PUMP	1
16	2600-0185	MOTOR, 24 VDC, ENCODER, 83:1 GEAR REDUCTION	1
17	7509-0340	MOTOR COVER, SERIES 100 PC PUMP	1
18a	7509-9390	CABLE ASSEMBLY, PC PUMP	1
18b	7509-9400	MOTOR CONNECTOR ASSEMBLY, PC PUMP	1
19	2800-0900	SCREW, 4-20 X 1/4" THREAD FORMING, SS	1
20	3300-0616	O-RING, 4.5 OD X 2.5 ID X 1MM WIDTH, VITON	1
21	2800-0295	WASHER, M2.5, LOCK, MEDIUM, SS	4
22	2800-0917	WASHER, #4, 0.115 ID X 0.209 OD, 0.034 THK, SS	4
23	7509-0970	SHAFT SEAL, BLOCK	1
24	2800-0688	SET SCREW, M3 X 4MM LG, CUP POINT, S.S	1
25	7509-9340	FA, PRECISION PC PUMP WITH BEARING BLOCK ASSY	1
26	2800-0897	SCREW, M2.5 X 14mm LG. SHC, SS	4
27	7509-0950	COUPLING HALF TOP	1
28	7509-0960	COUPLING DISC	1
29	3300-0690	O-RING, SQUARE, 3/4" ID X 7/8" OD X 1/16 W, BUNA N	2
30	3300-0353	CUP SEAL, UHMW, SS. SPRING, TS7000	1

**For Sales  
and Support:**

Techcon Corporate Headquarters  
10800 Valley View Street  
Cypress, California, 90630, USA  
Tel: 1-714-799-9910 | Fax: 1-714-828-2001

Visit our website to contact the  
Techcon office nearest you.

[techcon.com/contact-us](http://techcon.com/contact-us)